

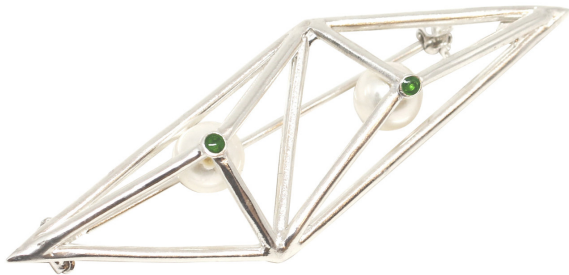
ARTEMEST

JEWELRY : BROOCHES

Co.Ro

DOUBLE PRISM WIRE SILVER PIN WITH PEARLS

\$220



DESCRIPTION

Double Prism Wire is a collection inspired by a futuristic world where rigorous geometry creates an elegant series of empty and full volumes. In this piece, the pin's diamond shape is made of silver and encloses two pearls accented by two green enamel dots. Minimalist and sophisticated, this pin will be a stunning addition to a pastel-colored attire, where the delicate hue of the silver and the pearls will stand out creating a mesmerizing three-dimensional effect.

DETAILS & DIMENSIONS

- Material: Silver, Pearls, Enamel
- Dimensions (in): W 2.36 x D 0.79 x H 1.57
- Dimensions (cm): W 6 x D 2 x H 4
- Handmade In Italy