

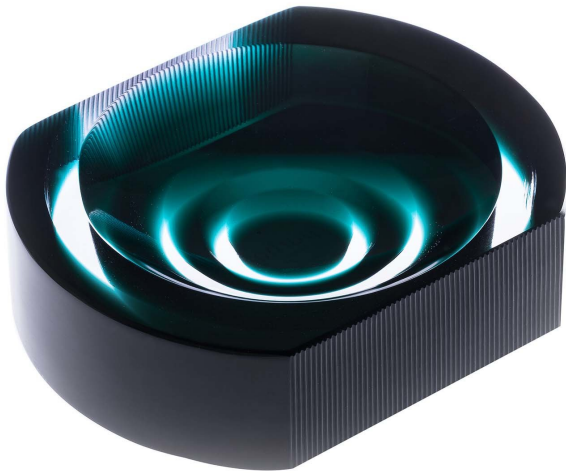
ARTEMEST

LIFESTYLE : LEISURE : SMOKING GOODS

Purho

IRIDE CUT ASHTRAY EMERALD GREEN BY FEDERICO PERI

\$570



DESCRIPTION

Iride is a collection of ashtrays that almost resemble an eye from which the collection derives its name. The Iride Cut, in Emerald Green, has two flat sides and vertical ribbed decoration on the outer surface. Crafted in alternating bands of Murano glass, colored and crystal, the design forms circular patterns, clear when viewed from above.

DETAILS & DIMENSIONS

- Material: Murano Glass
- Dimensions (in): W 5.51 x D 3.94 x H 1.38
- Dimensions (cm): W 14 x D 10 x H 3.5
- Handmade In Italy