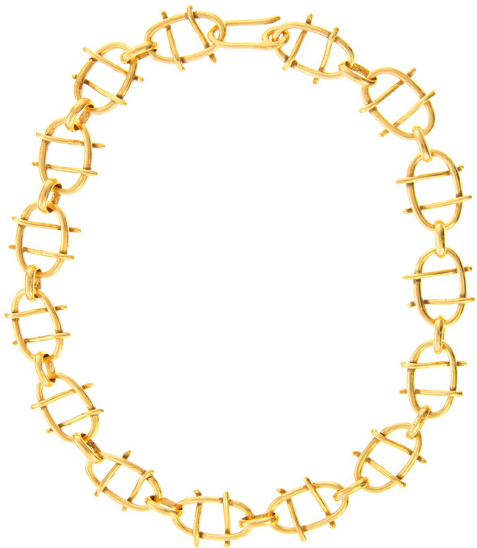


JEWELRY : NECKLACES

Giulia Barela

SIGNUM ALPHA NECKLACE

\$515



DESCRIPTION

The Signum Alpha Necklace is a sculptural jewel in which small geometric shapes combine to create a wearable alphabet of symbols. Simple lines generate primordial signs that merge into chains, a metaphor for a link that represents a connection between people but also a dialogue between the inner world and the outside. The designer approaches the artist Giuseppe Capogrossi's imagination towards beauty and art. The necklace is sculpted in Gold-plated bronze using the lost wax casting technique.

DETAILS & DIMENSIONS

- Material: Bronze
- Dimensions (in): W 18.50 x D 0.39 x H 0.39
- Dimensions (cm): W 47 x D 1 x H 1
- Handmade In Italy